

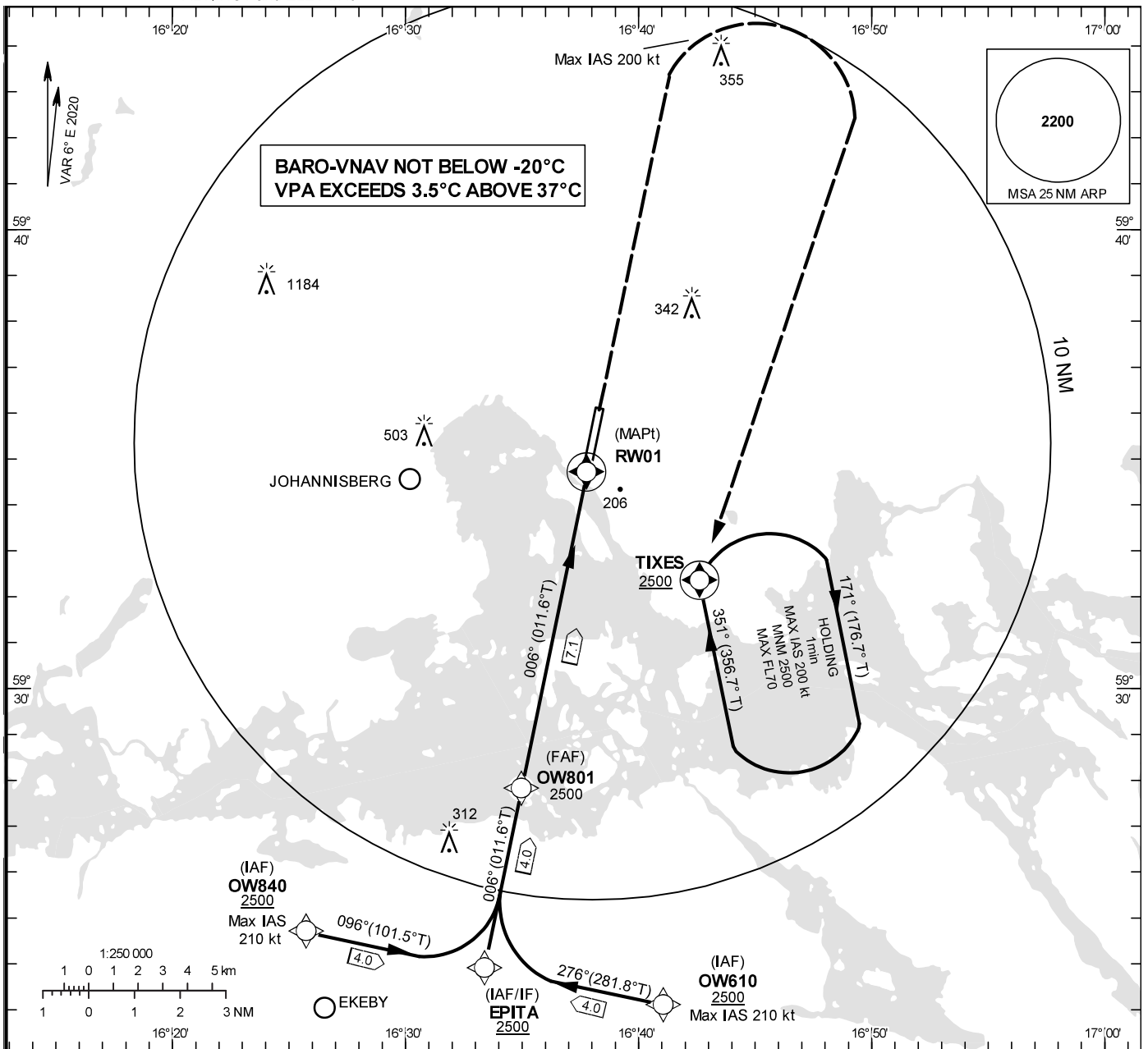
INSTRUMENT APPROACH CHART – ICAO

THR ELEV 6 ft, AD ELEV 21 ft
OCH are related to THR.
Circling OCH are related to AD ELEV
BRG are MAG (True).
ALT, HGT and ELEV in ft.

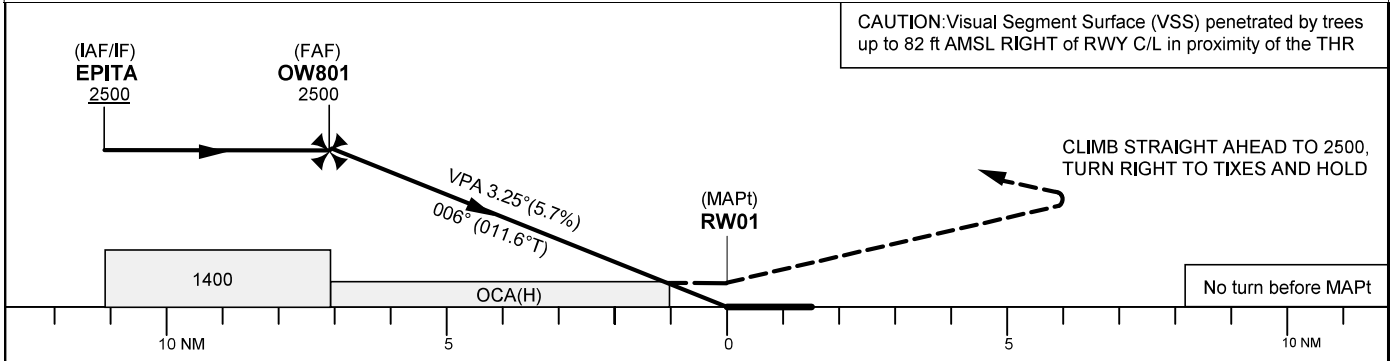
VÄSTERAS TOWER 130.605

RNP RWY 01

EGNOS CH 55001 E 01A



TA 5000 ft AMSL RDH 59,0 ft MAX SPEED within missed approach turn 200 kt IAS



Cat of ACFT	OCA (H)				Final approach Dist to RW 01	Distance FAF-MAPt 7.1 NM						
	A	B	C	D		7	6	5	4	3	2	1
LPV	339(333)	349(343)	358(352)	368(362)	ALT	2480	2140	1790	1450	1100	760	410
LNAV/VNAV	341(335)	351(345)	361(355)	371(365)								
LNAV	460 (454)											
Circling	530(510)	550(530)	900(880)	900(880)								

RNP RWY 01 via EPITA

Path Desc	Waypoint Identifier	Fly-over	Course °M(°T)	Dist /Time	Turn Dir	Altitude	Speed	VPA/RDH	Rec Navaid	Navigation Specification
IF	EPITA	N	-	-	-	+2500	-	-	-	RNP APCH
TF	OW801	N	006°(011.6°)	4.0 NM	-	@2500	-	-	-	RNP APCH
TF	RW01	Y	006°(011.6°)	7.1 NM	-	@65	-	-	-	RNP APCH
FA	-	-	006°(011.6°)	-	-	@2500	-200	-	-	RNP APCH
DF	TIXES	Y	-	-	R	+2500	-200	-	-	RNP APCH
HM	TIXES	Y	351°(356.7°)	1 min	R	+2500	-200	-	-	RNAV 1

RNP RWY 01 via OW610

Path Desc	Waypoint Identifier	Fly-over	Course °M(°T)	Dist /Time	Turn Dir	Altitude	Speed	VPA/RDH	Rec Navaid	Navigation Specification
IF	OW610	N	-	-	-	+2500	-210	-	-	RNP APCH
TF	EPITA	N	276° (281.8°)	4.0 NM	R	+2500	-210	-	-	RNP APCH
TF	OW801	N	006°(011.6°)	4.0 NM	-	@2500	-	-	-	RNP APCH
TF	RW01	Y	006°(011.6°)	7.1 NM	-	@65	-	-	-	RNP APCH
FA	-	-	006°(011.6°)	-	-	@2500	-200	-	-	RNP APCH
DF	TIXES	Y	-	-	R	+2500	-200	-	-	RNP APCH
HM	TIXES	Y	351°(356.7°)	1 min	R	+2500	-200	-	-	RNAV 1

RNP RWY 01 via OW840

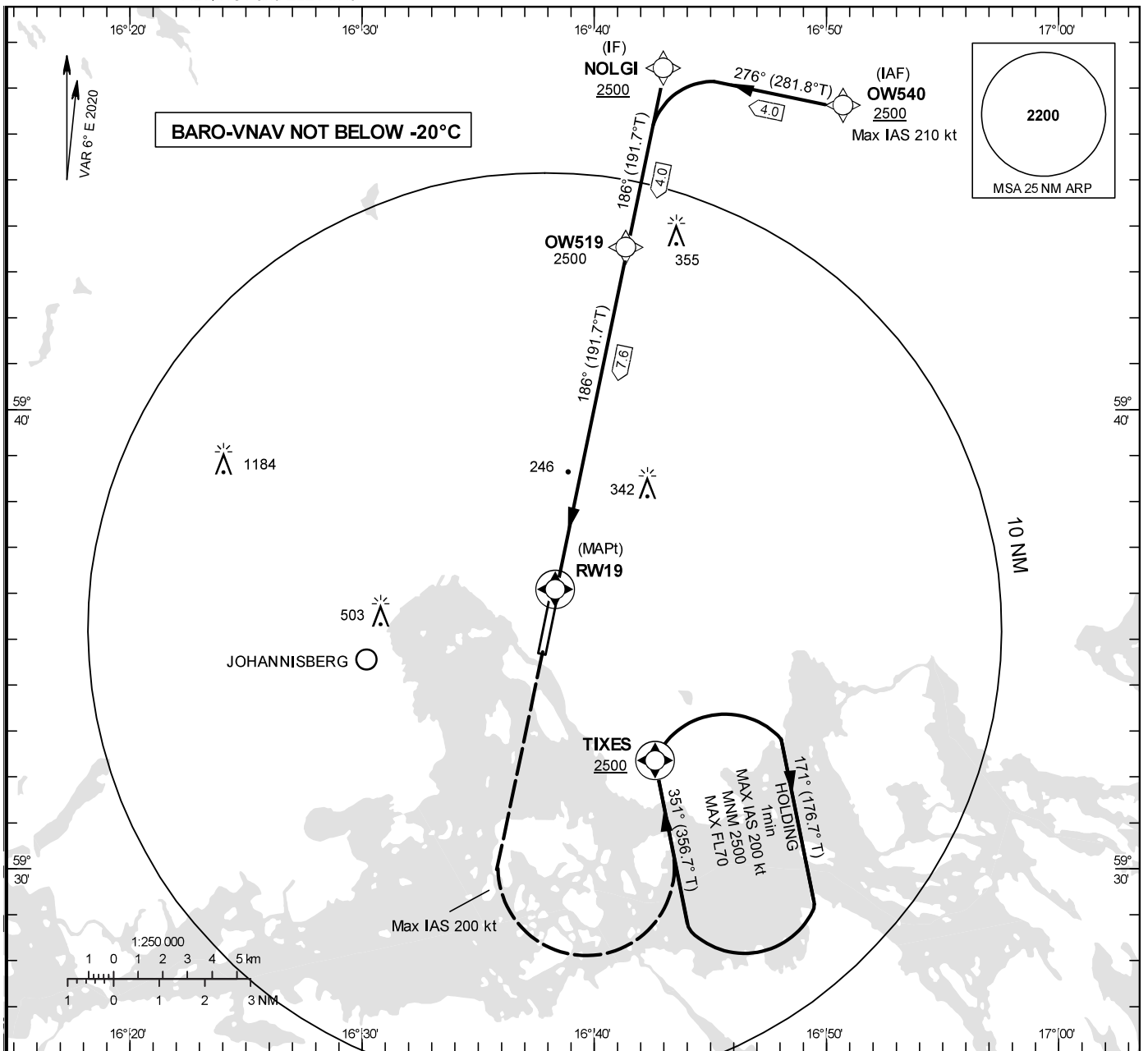
Path Desc	Waypoint Identifier	Fly-over	Course °M(°T)	Dist /Time	Turn Dir	Altitude	Speed	VPA/RDH	Rec Navaid	Navigation Specification
IF	OW840	N	-	-	-	+2500	-210	-	-	RNP APCH
TF	EPITA	N	096° (101.5°)	4.0 NM	L	+2500	-210	-	-	RNP APCH
TF	OW801	N	006°(011.6°)	4.0 NM	-	@2500	-	-	-	RNP APCH
TF	RW01	Y	006°(011.6°)	7.1 NM	-	@65	-	-	-	RNP APCH
FA	-	-	006°(011.6°)	-	-	@2500	-200	-	-	RNP APCH
DF	TIXES	Y	-	-	R	+2500	-200	-	-	RNP APCH
HM	TIXES	Y	351°(356.7°)	1 min	R	+2500	-200	-	-	RNAV 1

INSTRUMENT APPROACH CHART – ICAO
THR ELEV 21.7 ft, AD ELEV 21 ft
 OCH are related to THR.
 Circling OCH are related to AD ELEV
 BRG are MAG (True).
 ALT, HGT and ELEV in ft.

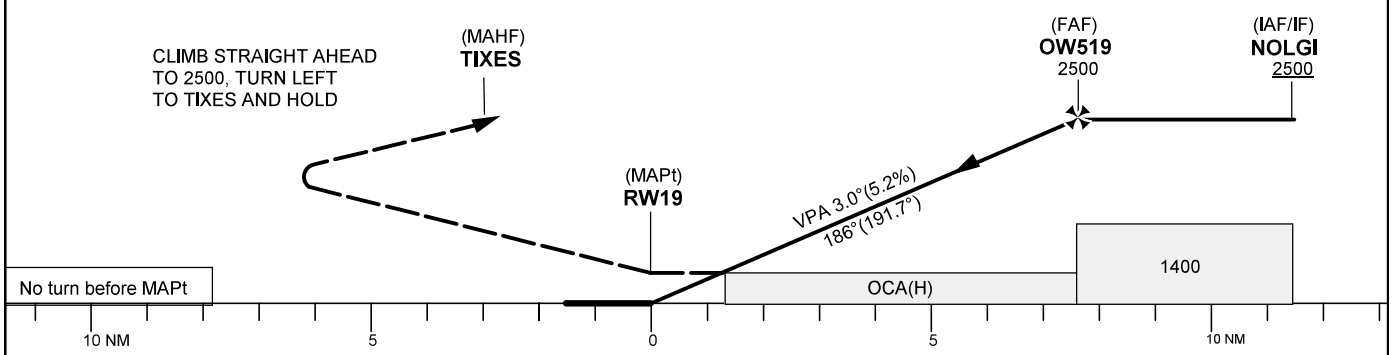
VÄSTERAS TOWER 130.605

RNP RWY 19

EGNOS CH 57171 E 19A



TA 5000 ft AMSL RDH 50 ft MAX SPEED within missed approach turn 200 kt IAS



Cat of ACFT	OCA (H)				Final approach Dist to RWY19	Distance FAF-MAPt 7.6 NM						
	A	B	C	D		7	6	5	4	3	2	1
LPV	339(317)	349(327)	358(336)	368(346)	ALT	2300	1990	1670	1350	1030	710	390
LNAV/VNAV	348(326)	358(336)	368(346)	378(356)								
LNAV	500(478)											
Circling	530(510)	550(530)	900(880)	900(880)								

RNP RWY 19 via NOLGI

Path Desc	Waypoint Identifier	Fly-over	Course °M(°T)	Dist /Time	Turn Dir	Altitude	Speed	VPA/RDH	Rec Navaid	Navigation Specification
IF	NOLGI	N	-	-	-	+2500	-	-	-	RNP APCH
TF	OW519	N	186°(191.7°)	4.0 NM	-	@2500	-	-	-	RNP APCH
TF	RW19	Y	186°(191.7°)	7.6 NM	-	@72	-	-	-	RNP APCH
FA	-	-	186°(191.7°)	-	-	@2500	-200	-	-	RNP APCH
DF	TIXES	Y	-	-	L	+2500	-200	-	-	RNP APCH
HM	TIXES	Y	351°(356.7°)	1 min	R	+2500	-200	-	-	RNAV1

RNP RWY 19 via OW540

Path Desc	Waypoint Identifier	Fly-over	Course °M(°T)	Dist /Time	Turn Dir	Altitude	Speed	VPA/RDH	Rec Navaid	Navigation Specification
IF	OW540	N	-	-	-	+2500	-210	-	-	RNP APCH
TF	NOLGI	N	276°(281.8°)	4.0 NM	L	+2500	-210	-	-	RNP APCH
TF	OW519	N	186°(191.7°)	4.0 NM	-	@2500	-	-	-	RNP APCH
TF	RW19	Y	186°(191.7°)	7.6 NM	-	@72	-	-	-	RNP APCH
FA	-	-	186°(191.7°)	-	-	@2500	-200	-	-	RNP APCH
DF	TIXES	Y	-	-	L	+2500	-200	-	-	RNP APCH
HM	TIXES	Y	351°(356.7°)	1 min	R	+2500	-200	-	-	RNAV1